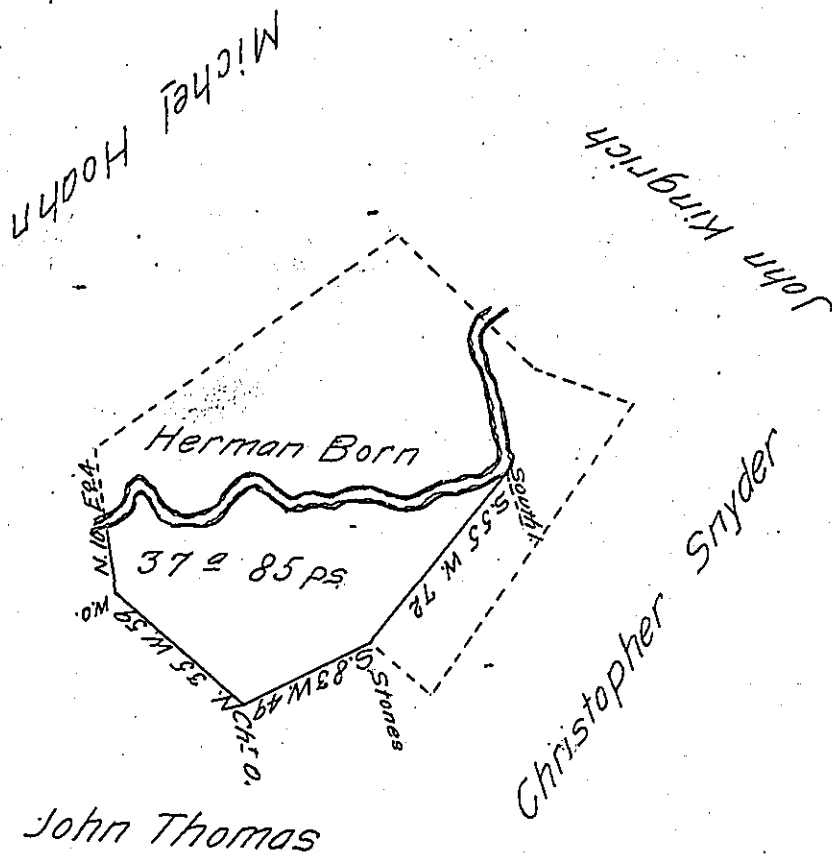


Meanderings
of the creek

- N. 58 E. 18
- S. 22 E. 14
- S. 64 E. 13
- N. 69 E. 21
- S. 42 E. 16
- N. 88 E. 7
- S. 62 E. 6
- S. 87 E. 12
- S. 55 E. 13
- N. 89 E. 40



Draft of a tract of land containing thirty-seven acres and eighty-five perches and allowance of six per cent for roads &c. Situate in Susquehanna Township Juniata County Surveyed for Francis Potsline the 8th day of November 1870; being part of a larger tract of one hundred and two acres and ninety-nine perches and allowance; originally surveyed in pursuance of a warrant granted to Herman Born, dated the 3rd day of November 1772.

Pf Adam Wilt C.S.

To J. M. Campbell Esqr.

Surveyor General of Penn^a

Note - The creek is the County line between Juniata and Snyder Counties.

IN TESTIMONY that the above is a copy of the original remaining on file in the Department of Internal Affairs of Pennsylvania, made conformably to an Act of Assembly approved the 16th day of February, 1833, I have hereunto set my Hand and caused the Seal of said Department to be affixed at Harrisburg, this seventh day of March 1904

Lucas P. Brown
Secretary of Internal Affairs.